

Cell Transport Review

During _____ (Balanced) your body tries to stay the _____.

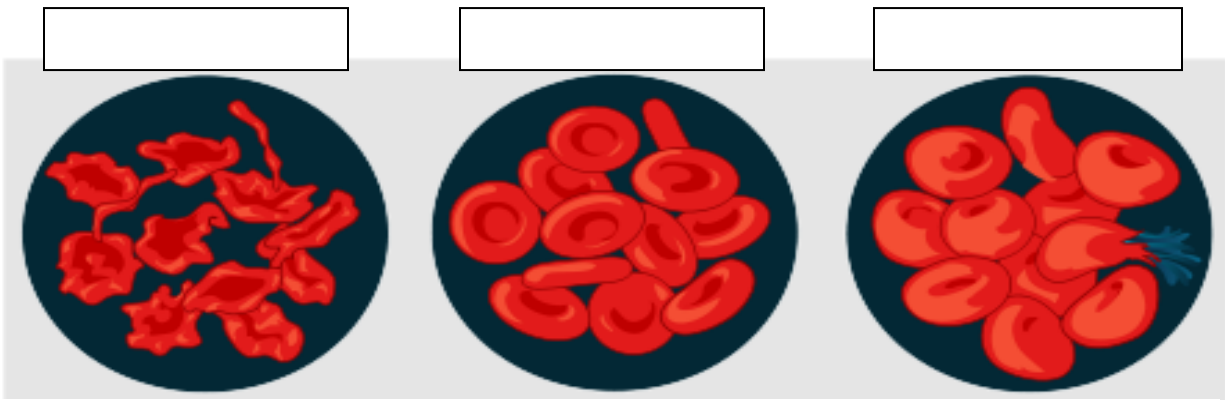
_____ - movement of substances without the use of energy.

What are the two types of Passive Transport? _____ and _____

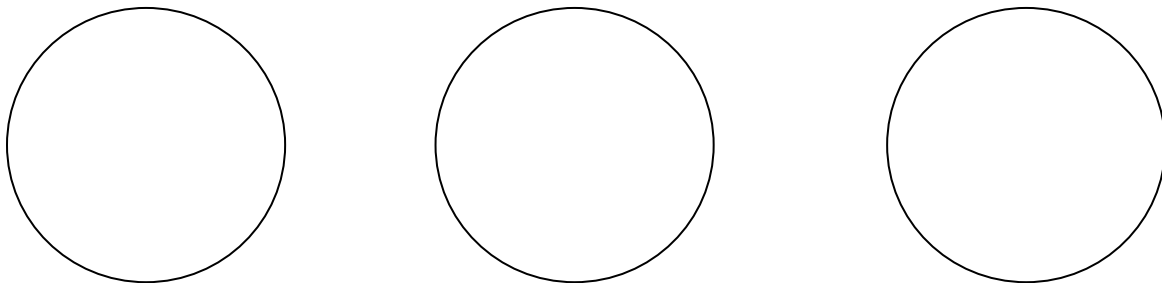
- _____ occurs when particles spread from an area of _____ concentration to an area of _____ concentration.
- _____ is the movement of _____ from _____ concentration to _____ concentration.

IN YOUR OWN WORDS and IN COMPLETE SENTENCES, What is the difference between the two types of Passive Transport?

Fill in the boxes with the correct tonicity term



Illustrate the three different types of tonicity using blue for water and green for salt. Use arrows to indicate the movement of H₂O in each type of tonicity.



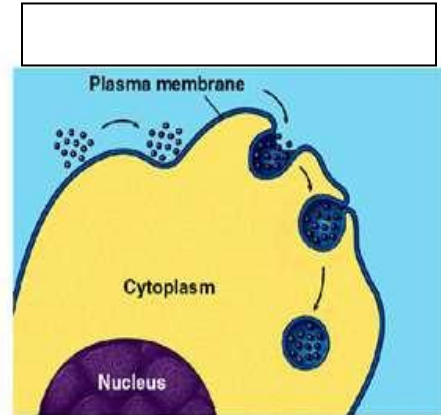
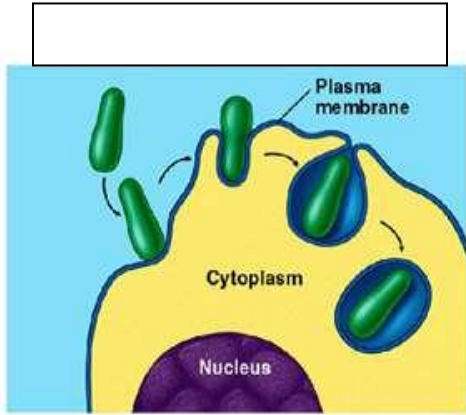
In your own words and using scientific terminology, describe the reason why Jennifer Strange died.

_____ - cells use _____ to move materials across the cell membrane. Particles spread from an area of _____ concentration to an area of _____ concentration.

What are the two types of Active Transport? _____ and _____

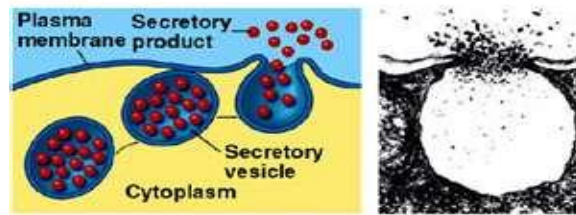
- _____ is the movement of bulk solids or liquids inside the cell membrane.

Identify below the two types of Endocytosis



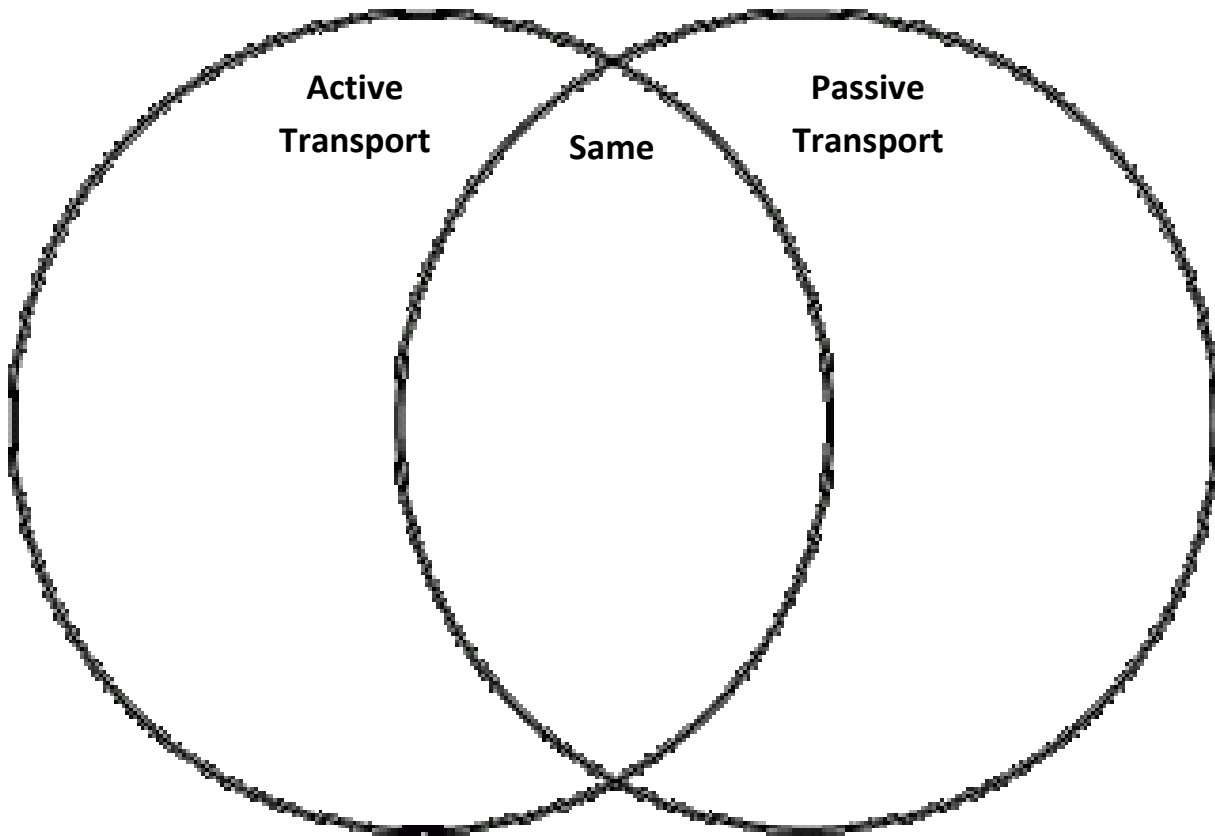
IN YOUR OWN WORDS and IN COMPLETE SENTENCES, explain what is happening at the two pictures above.

Which type of Active Transport is the diagram below?



IN YOUR OWN WORDS and IN COMPLETE SENTENCES, explain what is happening at the picture above.

Compare and Contrast Passive and Active Transport



IN YOUR OWN WORDS, what is Passive Transport?

IN YOUR OWN WORDS, what is Active Transport?