

Name: \_\_\_\_\_ Date: \_\_\_\_\_ Period: \_\_\_\_\_

### Cell Basics

The two major types of cells are p\_\_\_\_\_ c\_\_\_\_\_ and e\_\_\_\_\_ c\_\_\_\_\_.

	Prokaryote	Eukaryote
Meaning of word?	-	-
Nucleus? Yes or No		
Organelles? Yes or No		
Examples of organisms		

What is the difference between Osmosis and diffusion? (Answer in a complete sentence)

---



---



---

What is the difference between Active Transport and Passive Transport? (Complete sentence)

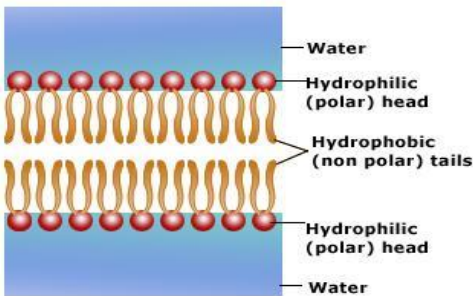
---



---

One type of active transport is p\_\_\_\_\_. This is when a cell moves a large amount of l\_\_\_\_\_ into the cell.

Another type of active transport is p\_\_\_\_\_. This is when a cell moves a large amount of s\_\_\_\_\_ material into the cell.



Explain why the cell membrane is ideal for maintaining homeostasis. (look at the lipids)

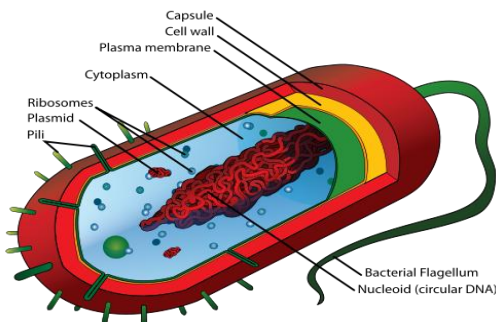
---



---



---

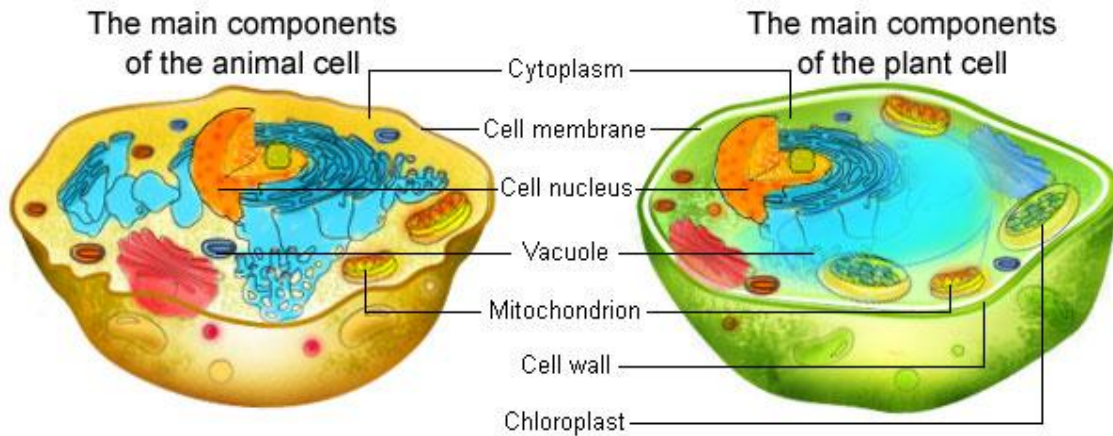


Which two structures do bacteria have that plants do not?

\_\_\_\_\_ and \_\_\_\_\_

Type of cell \_\_\_\_\_

Type of cell \_\_\_\_\_



Both of the cells above are e\_\_\_\_\_ cells

Write the function of the organelle next to its name. In the box on the left, place a check mark or an "X" if it is found in the Plant, Animal, or both.

Plant Cell	Animal Cell

**Nucleus:** \_\_\_\_\_

**Golgi Apparatus:** \_\_\_\_\_

**Ribosome:** \_\_\_\_\_

**Smooth ER:** \_\_\_\_\_

**Rough ER:** \_\_\_\_\_

**Vacuole:** \_\_\_\_\_

**Mitochondria:** \_\_\_\_\_

**Chloroplast:** \_\_\_\_\_

**Lysosome:** \_\_\_\_\_

**Cytoplasm:** \_\_\_\_\_

PLANTS	ANIMALS
Makes energy through P _____	Makes energy through C _____ R _____
WHERE/WHICH ORGANELLE? _____	WHERE/WHICH ORGANELLE? _____
FORMULA:	FORMULA:

What is the difference between Photosynthesis and Cellular respiration (3 PARTS)?

- 1) Tell me in **which cell** each process takes place in?
- 2) which **organelle** each process takes place in?
- 3) what the difference in the actual **formula/equation** is?

1. \_\_\_\_\_
2. \_\_\_\_\_
3. \_\_\_\_\_

1. What is the difference between a prokaryotic and a eukaryotic cell?

---



---

2. Visually, what is the difference between a plant cell and an animal cell?

---



---

3. Do plants have a cell membrane or mitochondria? Do animals have a vacuole?

---

4. How does the cell membrane act like a fence/border?

---

5. How does the protein channel on the cell membrane act like a bridge/Puente?

---

6. What is the difference between what the Mitochondria do and what the Chloroplast does?

---



---